



**Rudraksha Engineering &
Construction Manu India Pvt. Ltd.**

📍 **Regd. Office / Factory Address :**
Plot No.53,54,68,33 To 36, Jhajanala Pool,
Khapridih Akaltara Road, Industrial Area,
Kapan (akaltara)
Dist- Janjgir-champa C.G. - 495552

📍 **Warehouse Address :**
B/h CSEB Sub Station Bhanpuri, Urkura,
Post Birgaon, Raipur C.G Pin Code 493221.

☎ **+91 73898 49969 | +91 72250 22268 | +91 72250 22286**

✉ **info@manuindiaearthing.com** 🌐 **www.manuindiaearthing.com**

Kruti Creation - 98254 86168

Mfg. of Earthing
Electrode &
Earthing
Accessories



➤ **A Complete
Earthing Solution**

**MANU™
EARTHING**



COMPANY PROFILE

Leading Manufacturer of Earthing Electrodes & Accessories

Manu Earthing is a trusted and ISO-certified manufacturer of high-quality Earthing Electrodes and Earthing Accessories, dedicated to providing superior grounding solutions. With years of experience in the electrical and safety industry, we specialize in manufacturing and supplying advanced earthing systems that ensure safety, reliability, and efficiency for various industrial, commercial, and residential applications.

A Complete Earthing Solution



Certifications & Approvals
ISO 9001:2015 Certified
CE & RoHS Compliant
ISI Marked Products



VISION

To be a global leader in innovative and sustainable earthing solutions.



MISSION

To ensure the highest standards of electrical safety through quality products and customer-centric solutions.

OUR PRODUCTS

Chemical Earthing Electrodes

Earthing Rods

Lightning Arresters & Air Terminals

Strips and Flats

Earthing Plates

Earthing Conductors

Wires & Cables

Earthing Accessories

Industries We Serve

01 Power Plants & Substations

04 Manufacturing Units

02 Telecommunications

05 Data Centers & IT Parks

03 Oil & Gas Industries

06 Railways & Infrastructure Projects

MEGI GI Pipe, Pipe in Pipe, Strip in Pipe Earthing Electrode

A GI Pipe, Pipe in Pipe, Strip in Pipe Earthing Electrode is a type of earthing electrode made from galvanized iron pipe that has undergone electroplating. This process enhances the pipe's corrosion resistance and durability by plating with zinc. GI Coating ranges from 40 to 50 micron's (µm).



Pipe Dia (mm)	Inner Strip(mm) / Pipe (OD)	Total Length (mm)	Terminal Size (mm)
48	20 x 3 / 25	1000	40x6
48	20 x 3 / 25	2000	40x6
48	20 x 3 / 25	3000	40x6
58	25 x 3 / 32	1000	50x6
58	25 x 3 / 32	2000	50x6
58	25 x 3 / 32	3000	50x6
76	25 x 3 / 32	1000	50x6
76	25 x 3 / 32	2000	50x6
76	25 x 3 / 32	3000	50x6
88	32 x 5 / 48	1000	50x6
88	32 x 5 / 48	2000	50x6
88	32 x 5 / 48	3000	50x6

*Sizes can be customized

KEY FEATURES

- Designed for fast fault current dissipation.
- Low maintenance on site.
- Quick and simple installation process to minimize downtime and reduce setup costs.
- Most suitable for soil condition with pH 5.0 to 8.0.
- Moisture booster chemical bags provided for low earth resistance.

MEHDGI HOT DIP GI Pipe, Pipe in Pipe, Strip in Pipe Earthing Electrode

A HOT DIP GI Pipe, Pipe in Pipe, Strip in Pipe Earthing Electrode is a type of earthing electrode made from galvanized iron pipe that has undergone hot-dip galvanization. This process enhances the pipe's corrosion resistance and durability by immersing it in molten zinc. GI Coating ranges from 86 to 100 micron's (µm).



Pipe Dia (mm)	Inner Strip(mm) / Pipe (OD)	Total Length (mm)	Terminal Size (mm)
48	20 x 3 / 25	1000	40x6
48	20 x 3 / 25	2000	40x6
48	20 x 3 / 25	3000	40x6
58	25 x 3 / 32	1000	50x6
58	25 x 3 / 32	2000	50x6
58	25 x 3 / 32	3000	50x6
76	25 x 3 / 32	1000	50x6
76	25 x 3 / 32	2000	50x6
76	25 x 3 / 32	3000	50x6
88	32 x 5 / 48	1000	50x6
88	32 x 5 / 48	2000	50x6
88	32 x 5 / 48	3000	50x6

*Sizes can be customized

KEY FEATURES

- Hot dip galvanized for corrosion protection.
- Designed for fast fault current dissipation.
- Low maintenance on site.
- Quick and simple installation process to minimize downtime and reduce setup costs.
- Most suitable for soil condition with pH 5.0 to 8.0.
- Moisture booster chemical bags provided for low earth resistance.

MEHDGIR HDG GI Rod

An HDG (Hot Dip Galvanized) rod is a corrosion-resistant grounding electrode made from galvanized iron. The rod undergoes a hot-dip galvanization process, wherein it is immersed in molten zinc to form a protective zinc coating.



Rod Dia (mm)	Total Length (mm)	Terminal Size (mm)
14	1000	32 x 5
14	2000	32 x 5
14	3000	32 x 5
16	1000	32 x 5
16	2000	32 x 5
16	3000	32 x 5
17	1000	32 x 5
17	2000	32 x 5
17	3000	32 x 5
25	1000	40 x 5
25	2000	40 x 5
25	3000	40 x 5
32	1000	40 x 5
32	2000	40 x 5
32	3000	40 x 5
38	1000	50 x 6
38	2000	50 x 6
38	3000	50 x 6
48	1000	75 x 10
48	2000	75 x 10
48	3000	75 x 10

*Sizes can be customized

KEY FEATURES

- Designed for fast fault current dissipation
- Low maintenance on site
- Easy and Fast installation on site
- Most suitable for soil condition with pH 5.0 to 8.0
- Moisture booster chemical bags provided for low earth resistance
- Upto 100 micron's (µm) HDG Zinc electroplating bonding on rod

GI Funnel Pipe



GI Funnel Pipe	
State	HDG Cast
Pre Cast Size	50 - 150 mm
Aggregate Ratio	2/3
Cement Ratio	1/3
Weight	5 Litres

*Sizes can be customized

Conductive Concrete Earthing Electrode

Conductive Concrete is electrically conductive aggregate material. It provides enduring, stable as well as low resistance Earthing solutions that are effective in several complex ground conditions.



Conductive Concrete Earthing Electrode	
State	Pre Cast
Pre Cast Size	75 - 150 mm
Aggregate Ratio	2/3
Cement Ratio	1/3
Weight	5 Litres

*Sizes can be customized

HDG Mast & SS Mast



HDG Mast	
Elevation Height	1 Mtrs to 9 Mtrs
Diameter	48 to 100mm
Material	MS HDG
Wind Speed	150 km/h

Stainless Steel Mast (SS 304)	
Elevation Height	1 Mtrs to 9 Mtrs
Diameter	48 to 100mm
Material	SS 304
Wind Speed	150 km/h

MECB Copper Bonded Pipe, Pipe in Pipe & Strip in Pipe Earthing Electrode

Copper Bonded Pipe, Pipe in Pipe & Strip in Pipe Earthing Electrode with Welded Clamp have a core of high tensile low carbon steel with each rod made by molecularly bonding 99.9% Pure Electrolytic Copper. They are easy to install and directly can be connected with conductor.



Pipe Dia (mm)	Inner Strip(mm) / Pipe (OD)	Total Length (mm)	Terminal Size (mm)
48	20 x 3 / 25	1000	40 x 6
48	20 x 3 / 25	2000	40 x 6
48	20 x 3 / 25	3000	40 x 6
58	25 x 3 / 32	1000	50 x 6
58	25 x 3 / 32	2000	50 x 6
58	25 x 3 / 32	3000	50 x 6
76	25 x 3 / 32	1000	50 x 6
76	25 x 3 / 32	2000	50 x 6
76	25 x 3 / 32	3000	50 x 6
88	32 x 5 / 48	1000	50 x 6
88	32 x 5 / 48	2000	50 x 6
88	32 x 5 / 48	3000	50 x 6

*Sizes can be customized

KEY FEATURES

- Long Life
- Enhance Conductivity
- Upto 250 micron's (µm) Copper Bonding on Electrode
- Low maintenance on site
- Easy and Fast installation on site
- Most suitable for soil condition with pH 5.0 to 8.0
- Moisture booster chemical bags provided for low earth resistance

MEPC Pure Copper Pipe, Pipe in Pipe & Strip in Pipe Earthing Electrode

A Pure Copper Pipe, Pipe in Pipe & Strip in Pipe Earthing Electrode is a specialized earthing component made entirely of high-conductivity copper. It has a super corrosion resistance, due to purity of the copper.



Pipe Dia (mm)	Inner Strip(mm) / Pipe (OD)	Total Length (mm)	Terminal Size (mm)
48	20 x 3 / 25	1000	40x6
48	20 x 3 / 25	2000	40x6
48	20 x 3 / 25	3000	40x6
58	25 x 3 / 32	1000	40x6
58	25 x 3 / 32	2000	40x6
58	25 x 3 / 32	3000	40x6
76	25 x 3 / 32	1000	40x6
76	25 x 3 / 32	2000	40x6
76	25 x 3 / 32	3000	40x6
88	32 x 5 / 48	1000	40x6
88	32 x 5 / 48	2000	40x6
88	32 x 5 / 48	3000	40x6

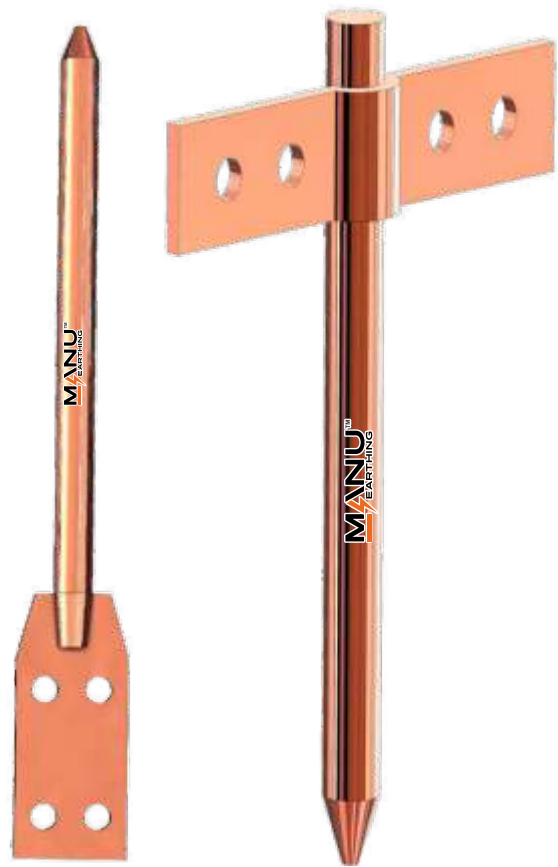
*Sizes can be customized

KEY FEATURES

- Used 99.9% pure copper for long life
- Designed for fast fault current dissipation
- Low maintenance on site
- Easy and Fast installation on site
- Most suitable for soil condition with pH 5.0 to 8.0
- Moisture booster chemical bags provided for low earth resistance

MECBR Copper Bonded Earthing Rod

A Copper Bonded Earthing Rod is typically a grounding rod used in electrical systems. It is made by bonding copper to a steel rod, which provides both the strength of steel and the corrosion resistance of copper. These rods are commonly used in grounding systems for industrial, commercial, and residential applications to ensure safety and proper functioning of electrical systems.



Rod Dia (mm)	Total Length (mm)	Terminal Size (mm)
14	1000	32 x 5
14	2000	32 x 5
14	3000	32 x 5
16	1000	32 x 5
16	2000	32 x 5
16	3000	32 x 5
17	1000	32 x 5
17	2000	32 x 5
17	3000	32 x 5
25	1000	40 x 5
25	2000	40 x 5
25	3000	40 x 5
32	1000	40 x 5
32	2000	40 x 5
32	3000	40 x 5
38	1000	50 x 6
38	2000	50 x 6
38	3000	50 x 6
48	1000	75 x 10
48	2000	75 x 10
48	3000	75 x 10

*Sizes can be customized

KEY FEATURES

- Designed for fast fault current dissipation
- Low maintenance on site
- Easy and Fast installation on site
- Most suitable for soil condition with pH 5.0 to 8.0
- Moisture booster chemical bags provided for low earth resistance
- Upto 250 micron's (µm) copper bonding on rod

MECBTR Copper Bonded Earthing Rod (Threaded)

Copper Bonded Earthing Rod (Threaded) have a core of high tensile low carbon steel with each rod made by molecularly bonding 99.9% Pure Electrolytic Copper. Threads on the rods are normally formed by a roll threading process giving strength to the threads & eliminating risk of chipping of threads while driving the rod into the ground.



Rod Dia (mm)	Thread Size (Inch)	Total Length (mm)
12	1/2"	1000
12	1/2"	2000
12	1/2"	3000
14	5/8"	1000
14	5/8"	2000
14	5/8"	3000
16	5/8"	1000
16	5/8"	2000
16	5/8"	3000
17	3/4"	1000
17	3/4"	2000
17	3/4"	3000
19	3/4"	1000
19	3/4"	2000
19	3/4"	3000
25	1"	1000
25	1"	2000
25	1"	3000

*Sizes can be customized

KEY FEATURES

- Designed for fast fault current dissipation
- Low maintenance on site
- Easy and Fast installation on site
- Most suitable for soil condition with pH 5.0 to 8.0
- Moisture booster chemical bags provided for low earth resistance
- Upto 250 micron's (µm) copper bonding on rod

MECBUTR Copper Bonded Earthing Rod (Un-Threaded)

A Copper Bonded Earthing Rod (Un-Threaded) have a core of high tensile low carbon steel with each rod made by molecularly bonding 99.9% Pure Electrolytic Copper.



Rod Dia (mm)	Total Length (mm)
12	1000
12	2000
12	3000
14	1000
14	2000
14	3000
16	1000
16	2000
16	3000
17	1000
17	2000
17	3000
19	1000
19	2000
19	3000
25	1000
25	2000
25	3000

*Sizes can be customized

KEY FEATURES

- Designed for fast fault current dissipation
- Low maintenance on site
- Easy and Fast installation on site
- Most suitable for soil condition with pH 5.0 to 8.0
- Moisture booster chemical bags provided for low earth resistance
- Upto 250 micron's (µm) copper bonding on rod

MECBRCDH Copper Bonded Earthing Rod with Coupler & Driving Head

A Copper Bonded Earthing Rod with Coupler & Driving Head have a core of high tensile low carbon steel. Threads on the rods are formed by roll threading process giving extra strength to the threads. One can drive the threaded Sectional Grounding Rod at least 10/20/30/40 feet or more to reach better conductivity of soils.



Rod Dia (mm)	Thread Size (Inch)	Total Length (mm)
12	1/2"	1000
12	1/2"	2000
12	1/2"	3000
14	5/8"	1000
14	5/8"	2000
14	5/8"	3000
16	5/8"	1000
16	5/8"	2000
16	5/8"	3000
17	3/4"	1000
17	3/4"	2000
17	3/4"	3000
19	3/4"	1000
19	3/4"	2000
19	3/4"	3000
25	1"	1000
25	1"	2000
25	1"	3000

Coupler & Driving Head (inch)

1/2"
5/8"
3/4"
1"

*Sizes can be customized

KEY FEATURES

- Designed for fast fault current dissipation
- Low maintenance on site
- Easy and Fast installation on site
- Most suitable for soil condition with pH 5.0 to 8.0
- Moisture booster chemical bags provided for low earth resistance
- Upto 250 micron's (µm) copper bonding on rod

MEPCR Pure Copper Earthing Rod

A Pure Copper Earthing Rod is typically a grounding rod used in electrical systems. It is made by using 99.9% copper, which provides both the long life and the corrosion resistance of copper. These rods are commonly used in grounding systems for industrial, commercial, and residential applications to ensure safety and proper functioning of electrical systems.



Rod Dia (mm)	Total Length (mm)	Terminal Size (mm)
14	1000	32 x 5
14	2000	32 x 5
14	3000	32 x 5
16	1000	32 x 5
16	2000	32 x 5
16	3000	32 x 5
17	1000	32 x 5
17	2000	32 x 5
17	3000	32 x 5
25	1000	40 x 5
25	2000	40 x 5
25	3000	40 x 5
32	1000	40 x 5
32	2000	40 x 5
32	3000	40 x 5
38	1000	50 x 6
38	2000	50 x 6
38	3000	50 x 6
48	1000	75 x 10
48	2000	75 x 10
48	3000	75 x 10

*Sizes can be customized

KEY FEATURES

- Used 99.9% pure copper for long life
- Designed for fast fault current dissipation
- Low maintenance on site
- Easy and Fast installation on site
- Most suitable for soil condition with pH 5.0 to 8.0
- Moisture booster chemical bags provided for low earth resistance

MEPCTR Pure Copper Earthing Rod (Threaded)

A Pure Copper Earthing Rod (Threaded) are made from high conductivity hard drawn copper. They are ideally suited to soil conditions that are very corrosive, such as soil with high salt & moisture content. Threads on the rods are normally formed by a roll threading process giving strength to the threads & eliminating risk of chipping of threads while driving the rod into the ground.



Rod Dia (mm)	Thread Size (Inch)	Total Length (mm)
12	1/2"	1000
12	1/2"	2000
12	1/2"	3000
14	5/8"	1000
14	5/8"	2000
14	5/8"	3000
16	5/8"	1000
16	5/8"	2000
16	5/8"	3000
17	3/4"	1000
17	3/4"	2000
17	3/4"	3000
19	3/4"	1000
19	3/4"	2000
19	3/4"	3000
25	1"	1000
25	1"	2000
25	1"	3000

*Sizes can be customized

KEY FEATURES

- Used 99.9% pure copper for long life
- Designed for fast fault current dissipation
- Low maintenance on site
- Easy and Fast installation on site
- Most suitable for soil condition with pH 5.0 to 8.0
- Moisture booster chemical bags provided for low earth resistance

MEPCUTR Pure Copper Earthing Rod (Un-Threaded)

A Pure Copper Earthing Rod (Un-Threaded) are made from high conductivity hard drawn copper and made by 99.9% pure copper. They are ideally suited to soil conditions that are very corrosive, such as soil with high salt & moisture content.



Rod Dia (mm)	Total Length (mm)
12	1000
12	2000
12	3000
14	1000
14	2000
14	3000
16	1000
16	2000
16	3000
17	1000
17	2000
17	3000
19	1000
19	2000
19	3000
25	1000
25	2000
25	3000

*Sizes can be customized

KEY FEATURES

- Used 99.9% pure copper for long life
- Designed for fast fault current dissipation
- Low maintenance on site
- Easy and Fast installation on site
- Most suitable for soil condition with pH 5.0 to 8.0
- Moisture booster chemical bags provided for low earth resistance

MEPCRCDH Pure Copper Earthing Rod with Coupler & Driving Head

A Pure Copper Earthing Rod with Coupler & Driving Head is made by 99.9% pure copper. Threads on the rods are formed by roll threading process giving extra strength to the threads. One can drive the threaded Sectional Grounding Rod at least 10/20/30/40 feet or more to reach better conductivity of soils.



Rod Dia (mm)	Thread Size (Inch)	Total Length (mm)
12	1/2"	1000
12	1/2"	2000
12	1/2"	3000
14	5/8"	1000
14	5/8"	2000
14	5/8"	3000
16	5/8"	1000
16	5/8"	2000
16	5/8"	3000
17	3/4"	1000
17	3/4"	2000
17	3/4"	3000
19	3/4"	1000
19	3/4"	2000
19	3/4"	3000
25	1"	1000
25	1"	2000
25	1"	3000

Coupler & Driving Head (inch)

1/2"
5/8"
3/4"
1"

*Sizes can be customized

KEY FEATURES

- Designed for fast fault current dissipation
- Low maintenance on site
- Easy and Fast installation on site
- Most suitable for soil condition with pH 5.0 to 8.0
- Moisture booster chemical bags provided for low earth resistance
- Used 99.9% pure copper for long life.

MECI Centrifugally Cast Iron Earthing Electrode

A centrifugally cast iron earthing electrode is a durable, corrosion-resistant grounding device made from molten iron into shape. It safely directs electrical fault currents into the ground, commonly used in power systems for reliable and cost-effective earthing.



High Tension Earthing					
Inner Dia (ID)	Outer Dia (OD)	Thickness	Length Available		
100	114	7.0	2500	2700	3000
100	120	10.0	2500	2700	3000
100	126	13.0	2500	2700	3000
150	170	10.0	2500	2700	3000
150	176	13.0	2500	2700	3000

Note: *All Dimensions are in millimeters (mm). | *Tolerances applicable as per relevant standards.

Low Tension Earthing								
Inner Dia (ID)	Outer Dia (OD)	Thickness	Length Available					
50	57	3.5	1000	1500	1800	-	-	-
75	82	3.5	1000	1500	1800	2500	2750	2900
100	108	4.0	1000	1500	1800	2500	2750	2900
150	160	5.0	1000	1500	1800	2500	2750	2900

Note: *All Dimensions are in millimeters (mm). | *Tolerances applicable as per relevant standards.

KEY FEATURES

- Best in-class corrosion resistance
- Durable & Reliable
- Excellent & Uniform current dissipation
- Offers a durable and reliable earthing solution at a lower cost compared to other grounding materials like copper.
- Designed for easy handling and installation, with uniform dimensions and mechanical properties.

Pure Copper Lightning Arrester

A Copper Lightning Spike Arrester is a metal rod or conductor mounted on top of a building and electrically connected to the ground through a wire or earthing copper strips, to protect the building in the event of a lightning strike



Ball Dia (mm)	Pipe Length (mm)	Pipe OD (mm)	No. of Spikes
42	1200	25	5
62	1200	25	5
85	1200	25	5
100	1200	25	5

*Sizes can be customized

ESE Lightning Arrester

The ESE air terminal made use of proprietary designed metal enclosures around the ordinary lightning rods to create the ionization that can generate the artificial streamers earlier than the natural ones. Lightning strike counter is used for recording times of lightning strikes of various kinds of lightning eliminators. It is a kind of electro mechanical counter with digital display facility and also provides information on maintenance and safety.



ESE Air Terminal	
Model	Nova & Piramit
Type of Terminal	Electroatmospheric
Standard	NFC 17-102/2011
Current Withstand	10/350µs - 100 kA
Testable	Yes

Protection Level				
Protection Radius (meters)				
Height (m)	Level 1	Level 2	Level 3	Level 4
2	32	34	39	43
3	47	52	58	64
4	63	69	78	86
5	79	86	97	107
7	79	87	98	108
9	79	88	99	109
10	79	88	99	109

*Sizes can be customized



Conventional Lightning Arrester Multi Points

Lightning Arrester	
Material	Brass & Copper
Dia (mm)	14 & 16 mm
Length (mm)	1000 - 3000 mm

*Sizes can be customized



Conventional Copper Bonded / GI Lightning Arrester

A Conventional Copper Bonded / GI Lightning Arrester comprises a copper core coated / GI coated onto a steel core for conductivity and strength. It includes hardware for installation and grounding, ensuring safe dissipation of lightning current and protection of electrical systems from damage.

Ball Dia (mm)	Rod Length (mm)	Rod OD (mm)	No. of Spikes
30	1000	14	5
30	1200	14	5
30	2000	14	5
30	3000	14	5

*Sizes can be customized



Ball Dia (mm)	Rod Length (mm)	Rod OD (mm)	No. of Spikes
30	1000	14	5
30	1200	14	5
30	2000	14	5
30	3000	14	5

*Sizes can be customized

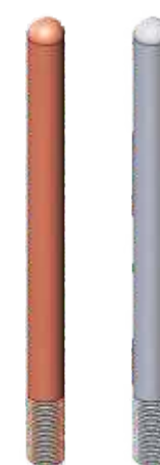


Air Terminal

AL Air Terminal	
Diameter	Ø10 - 16 mm
Length	600 - 3000 mm
Material	Aluminium
Standard	IS-IEC 62305 / 62561
Impulse Current	100 kA 10/350 µs
Base Plate	85 X 85 x 5 mm
Suitability	Ø8 - 10 mm down conductor
Usage	Vertical Air terminal for Lightning Protection



AL Air Terminal with SS Base	
Diameter	Ø10 - 16 mm
Length	600 - 3000 mm
Material	Aluminium
Standard	IS-IEC 62305 / 62561
Base Plate	85 X 85 x 5 mm
Material	Stainless Steel 304
Suitability	Ø8 - 10 mm down conductor & Flat/Strip 25 - 30 mm
Usage	Vertical Air terminal for Lightning Protection



Copper & SS Air Terminal	
Diameter	Ø10 - 16 mm
Length	600 - 3000 mm
Material	Copper & Stainless Steel
Standard	IS-IEC 62305 / 62561
Base Plate	Aluminium or SS
Usage	Vertical Air terminal for Lightning Protection



GI Strip/Flat

GI Strip / Flat	
Width (mm)	20, 25, 30, 32, 40, 50, 63, 75 & 100
Thickness (mm)	3, 5, 6, 8, 10 & 12
Standard	IS 2062
Coating	Electroplating Zinc
Microns	15 - 20 micron's (µm)
Length	5 - 6 Mtrs

*Sizes can be customized

HDG Strip / Flat



HDG Strip / Flat	
Width (mm)	20, 25, 30, 32, 40, 50, 63, 75 & 100
Thickness (mm)	3, 5, 6, 8, 10 & 12
Standard	IS 2062, 4759 & IS-IEC 62305
Coating	Hot Dip Zinc
Microns	86 + micron's (µm)
Length	5 - 6 Mtrs

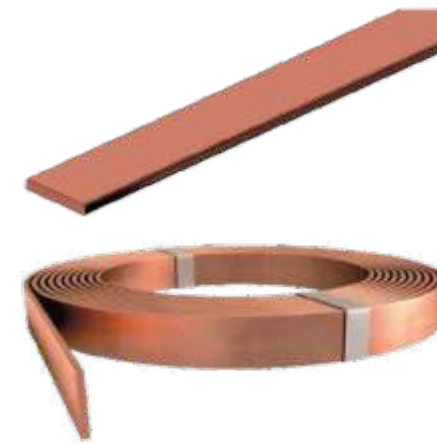
*Sizes can be customized

Pure Copper Strip/Flat



Pure Copper Strip / Flat	
Width (mm)	20, 25, 32, 40, 50, 63, 75, & 100
Thickness (mm)	3, 5, 6, 8, 10 & 12
Standard	IS-IEC 62305
Impulse Current	100 kA 10/350 µs
Grade	High Conductivity Electrolytic (ETP) & Commercial Grade
Standard	IS 191:2007

*Sizes can be customized



Copper Bonded Strip/Flat

Copper Bonded Strip / Flat	
Width (mm)	20, 25, 32, 40, 50, 63, 75, & 100
Thickness (mm)	3, 5, 6, 8, 10 & 12
Standard	IS-IEC 62305
Impulse Current	100 kA 10/350 µs
Grade	High Conductivity Electrolytic (ETP) & Commercial Grade
Standard	IS 191:2007

*Sizes can be customized

Stainless Steel Strip/Flat



Stainless Steel Strip/Flat	
Width (mm)	20, 25, 30, 32, 40, 50, 63, 75 & 100
Thickness (mm)	3, 5, 6, 8, 10 & 12
Standard	IS-IEC 62305
Grade	304, 304L, 316 & 316L

*Sizes can be customized

Aluminum Strip/Flat



Aluminum Strip/Flat	
Width (mm)	20, 25, 30, 32, 40, 50, 63, 75, & 100
Thickness (mm)	3, 5, 6, 8, 10 & 12
Standard	IS-IEC 62305
Impulse Current	100 kA 10/350 µs
Grade	High Conductivity Electrolytic (ETP) & Commercial Grade

*Sizes can be customized

HDG Earthing Plate



HDG Earthing Plate	
Size	300 x 300 mm & 600 x 600 mm
Thickness	3, 5 & 6 mm

*Sizes can be customized

Pure Copper Earthing Plate



Pure Copper Earthing Plate	
Size	300 x 300 mm, 600 x 600 mm, 1000 x 1000 mm
Thickness	1, 1.5, 3, 5 & 6 mm
Grade	High Conductivity Electrolytic (ETP) & Commercial Grade

*Sizes can be customized

Copper Bonded Earthing Plate



Copper Bonded Earthing Plate	
Size	150 x 150 mm, 300 x 300 mm, 600 x 600 mm
Thickness	1, 2, 3 & 6 mm

*Sizes can be customized

CI Earthing Plate



CI Earthing Plate	
Size	275 x 275 mm, 400 x 400 mm & 600 x 600 mm
Thickness	3, 5 & 6 mm
Finish	Silver

*Sizes can be customized

GI Conductor



GI Conductor	
Material	Galvanized Iron
SWG	6, 8, 10, 12, 14, 16, 18 & 20
Coating	50 - 120 GSM Hot DIP Galvanized & Electroplating
Finish	Silver

*Sizes can be customized

Copper Bonded Conductor



Copper Bonded Conductor	
Diameter	Ø8 & 10 mm
Cross section	50 & 78 mm ²
Standard	IS-IEC 62305 / 62561
Impulse Current	100 kA 10 / 350 µs
Microns	70, 120 & 250 (µm)
Copper Purity	99.9% (IS EN 15079:2015)
Usage	Horizontal Air terminal & down conductor for Lightning protection

*Sizes can be customized

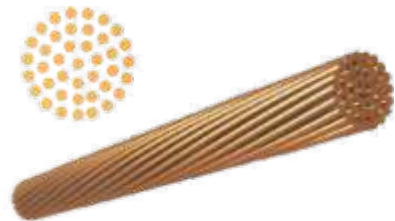
Pure Copper Conductor



Pure Copper Conductor	
Material	Copper
Grade	High Conductivity Electrolytic (ETP) & Commercial Grade
SWG	6, 8, 10, 12, 14, 16, 18 & 20
Finish	Bright Copper

*Sizes can be customized

Bare Stranded Copper Conductor



Bare Stranded Copper Conductor	
Material	Copper
Conductor Size	6, 10, 16, 25, 35, 50, 70, 95, 120, 150, 185, 240 & 300 mm ²
No. of Strands / Wire	7/1.04, 7/1.4, 7/1.7, 7/2.14, 7/2.52, 19/1.78, 19/2.14, 19/2.52, 37/2.03, 37/2.25, 37/2.52, 61/2.25 & 61/2.50

*Sizes can be customized

Stainless Steel Conductor



SS Conductor	
Diameter	Ø8 & Ø10 mm
Cross section	50 & 78 mm ²
Standard	IS-IEC 62305 / 62561
Grade	304
Usage	Horizontal Air terminal & down conductor for Lightning protection

*Sizes can be customized

Aluminium Conductor



Aluminium Conductor	
Diameter	Ø8 mm
Cross section	50 mm ²
Standard	IS-IEC 62305 / 62561
Impulse Current	100 kA 10 / 350 µs
Purity	99.5 %
Grade	Half Hard EC Grade
Electrical Resistivity Test	0.027 µ-m
Usage	Horizontal Air terminal & down conductor for Lightning protection

*Sizes can be customized

Ground Enhancing Compound



Ground Enhancing Compound	
State	Dry
Colour	Greyish Black
Electrical Resistivity	0.2 Ω.m
Standard	IEC 62561-7:2018
Weight	10 / 15 / 25 kgs

Bentonite Moisture Retaining Clay

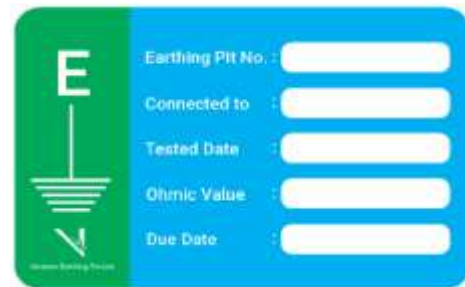


Bentonite Moisture Retaining Clay	
State	Dry
Colour	Yellowish Brown
Weight	25 & 50 kgs

Soil Conditioning Gel



Soil Conditioning Gel	
State	Wet
Colour	Greenish
pH value	4.92
Conductivity	109400 us/cm
Weight	5 Litres



Name Plate

Name Plate	
Material	GI & ACP
Size	150x200 & 300x400
Support	Flat/Angle

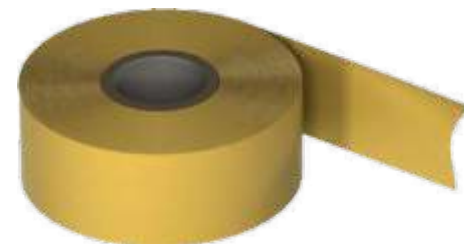
*Sizes can be customized

Digital Lightning Strike Counter



A Digital Lightning Strike Counter is an electronic device that detects and records the number of lightning strikes in a given area. It employs sensors to detect electromagnetic radiation from lightning, providing valuable data for monitoring and assessing the risk of electrical damage, enabling appropriate safety measures.

Anti-Corrosion Petrolatum Tape

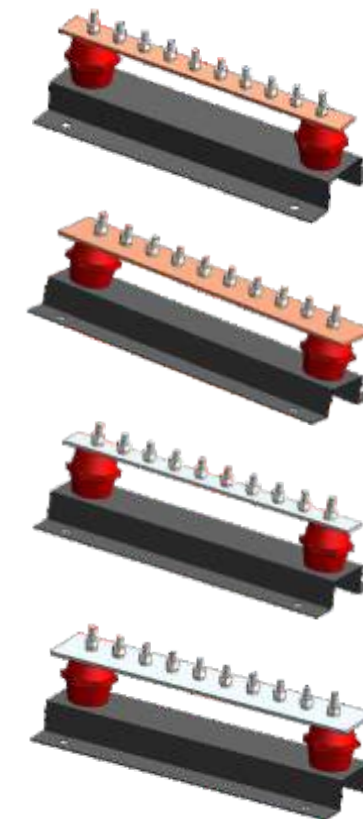


Anti-Corrosion Petrolatum Tape	
Material	Petrolatum
Type	UV Stabilised
Width	50 , 100 & 150 mm
Length	10 meters / per roll

PVC Heat Shrinkable Sleeves



PVC Heat Shrinkable Sleeves	
Material	PVC
Fire Resistance (as per UL94-V) materials	Self-Extinguishing with no dripping
Shrinking Temperature	150°C - 170°C for 4-5 mins
Suitable Strip/Flat Sizes	
Width (mm)	20, 25, 30, 32, 40, 50, 63, 75, & 100
Thickness (mm)	3, 5, 6, 8, 10 & 12



Earthing Bus Bar

Copper & Tinned Bus Bar	
Material	Stainless Steel
Grade	High Conductivity Electrolytic (ETP) & Commercial Grade
Ways	Length
6	400 mm
8	500 mm
10	650 mm
12	750 mm
14	850 mm
16	950 mm
18	1050 mm
20	1200 mm
22	1300 mm
24	1400 mm
26	1500 mm
28	1650 mm
30	1750 mm

*Sizes can be customized



Strip Insulator

Strip Insulator	
Material	DMC
Size	25x3mm, 25x6mm, 32x6mm, 40x6mm, 50x3mm & 50x6mm
Support	GI, Copper, Aluminium & SS



Earthing Boss / LA Insulator

Earthing Boss / LA Insulator	
Material	Stainless Steel / DMC
Grade	304, 304L, 316 & 316L
Length (mm)	25, 30, 40 & 50 mm
Dia (mm)	25, 30, 40 & 50 mm
Used with Straight Connector	



Electrical Insulator

Electrical Insulator	
Material	DMC
Length (mm)	20, 25, 30, 40 & 50 mm
Dia (mm)	20, 25, 30, 40 & 50 mm



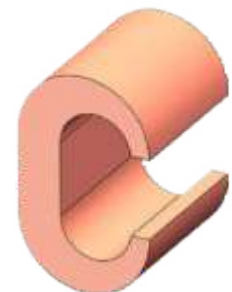
One Hole Cable Clip

One Hole Cable Clip	
Material	Copper
Size	8 - 20 mm / 50 - 300 mm ²
For fixing conductor or cables	

Conductor Holder

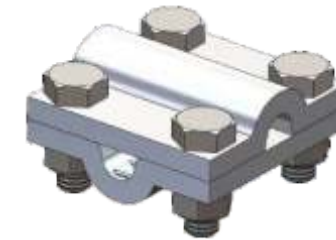


SS Conductor Holder	
Material	Stainless Steel
Grade	304
Standard	IS-IEC 62305 / 62561
Impulse Current	100 kA 10 / 350 μs
Suitability	8 mm
Used for holding Aluminium & SS Conductor	



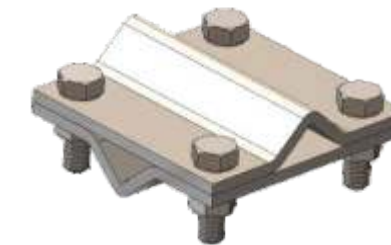
C Crimp Connector

C Crimp Connector	
Finish	Bare Copper
Sq.mm	4-120 mm ²
Purity	99%



Cross Connector

Aluminium Cross Connector	
Material	Aluminium
Standard	IS-IEC 62305 / 62561
Impulse Current	100 kA 10 / 350 μs
Dimensions	52 x 52 x 5.5mm
Rod Size	8-10 mm
Fasteners	Stainless Steel



SS Cross Connector	
Material	Stainless Steel 304
Standard	IS-IEC 62305 / 62561
Impulse Current	100 kA 10 / 350 μs
Dimensions	50 x 50 x 2.5mm
Rod Size	8-10 mm
Fasteners	Stainless Steel



SS Cross Connector Strip/Flat	
Material	Stainless Steel 304
Standard	IS-IEC 62305 / 62561
Impulse Current	100 kA 10 / 350 μs
Dimensions	60 x 60 x 2mm
Strip Size	25 - 30 mm
Fasteners	Stainless Steel

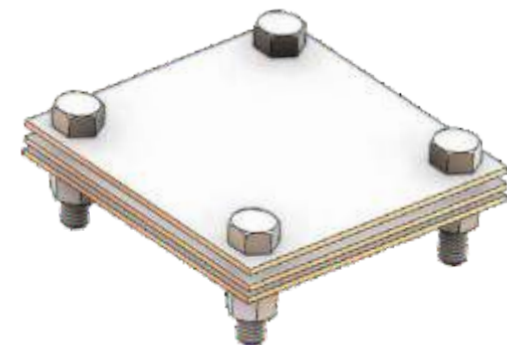


Parallel Connector	
Material	Stainless Steel 304
Standard	IS-IEC 62305 / 62561
Impulse Current	100 kA 10 / 350 μs
Dimensions	45 x 35 x 3mm
Rod Size	25 - 30 mm
Fasteners	Stainless Steel

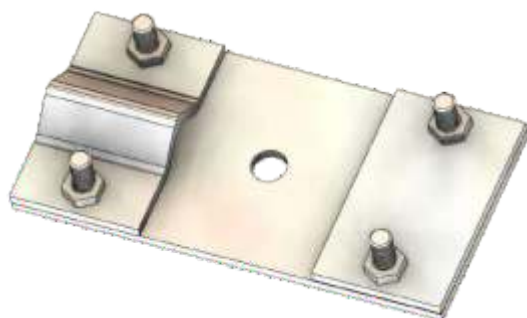
Test Link



Test Link - Round to Round	
Material	Stainless Steel
Grade	304
Standard	IS-IEC 62305 / 62561
Impulse Current	100 kA 10/350 μ s
Suitability	8 - 10 mm
Suitable	Round to Round
Used for disconnecting and testing	



Test Link - Flat to Flat	
Material	Stainless Steel
Grade	304
Standard	IS-IEC 62305 / 62561
Impulse Current	100 kA 10/350 μ s
Suitability	25 - 30 mm
Used for disconnecting and testing	

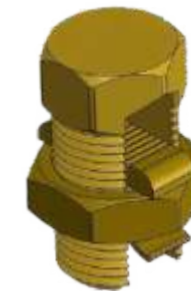


Test Link - Flat to Round	
Material	Stainless Steel
Grade	304
Standard	IS-IEC 62305 / 62561
Impulse Current	100 kA 10/350 μ s
Suitability	8 - 10 mm & 25 - 30 mm
Used for disconnecting and testing	



Square Tape Clamp

Square Tape Clamp	
Material	Brass
Suitability	20 x 3, 25 x 3, 25 x 6, 50 x 3, 50 x 6
To connect tape	



Split Bolt Connector

Split Bolt Connector	
Material	Brass & Copper
Size	10, 16, 25, 50, 70, 95 & 120 mm ²
To connect two or more wires	



Brass & Copper Saddle

Brass & Copper Saddle	
Material	Brass & Copper
Suitability	20x3, 25x3, 25x6, 50x3, 50x6
To connect tape to wall & roof	



DC Tape Clip

DC Tape Clip	
Material	Brass & Copper
Suitability	20x3, 25x3, 25x6, 50x3, 50x6 mm
To connect tape down conductor to wall	



DC Tape Clip	
Material	Aluminium
Suitability	25x3, 25x6 & 50x6mm
To connect tape down conductor to wall	

U Bolt Clamp



U Bolt Clamp / ReBar Clamp	
Material	Brass
Type	GUV
Impulse Current	100 kA 10/350 μ s
Suitability	17.2, 20 & 25 mm 35 - 300 mm ²
To connect earthing rod with cable	



U Bolt Clamp	
Material	Brass
Type	E
Suitability	17.2, 20 & 25 mm, 35 - 300 mm ²
To connect earthing rod with cable	



U Bolt Clamp	
Material	Brass
Type	E
Suitability	17.2, 20 & 25 mm, 25 - 30 mm
To connect earthing rod with cable	

Pipe Clamp



Pipe Clamp	
Material	Brass
Size	8 - 20 mm 50 - 300 mm ²
For Connection of pipes & cables	

Straight Connector

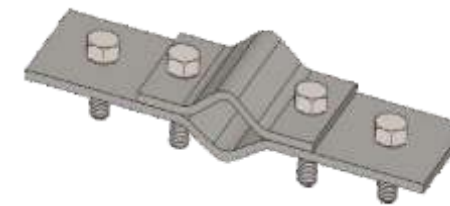


Straight Connector	
Material	Aluminum & Stainless Steel
Standard	IS-IEC 62305 / 62561
Impulse Current	100 kA 10/350 μ s
Dimensions	8 & 10 mm
Used with expansion piece	



Strip/Flat Holder

Strip / Flat Holder	
Material	Stainless Steel
Standard	304
Impulse Current	IS-IEC 62305 / 62561
Dimensions	100 kA 10/350 μ s
Used for holding GI, Aluminium & SS Strip	



Universal Clamp

Universal Clamp	
Material	SS & GI
Grade	304
Standard	IS-IEC 62305 / 62561
Impulse Current	100 kA 10/350 μ s

Diagonal Clamp



Diagonal Clamp	
Material	Stainless Steel
Grade	304
Standard	IS-IEC 62305 / 62561
Impulse Current	100 kA 10/350 μ s
Suitability	8 - 10 mm

Standing Seam Clamp



Standing Seam Clamp	
Material	Stainless Steel
Standard	304
Impulse Current	IS-IEC 62305 / 62561
Dimensions	Any Conductor Holder
For roof without puncture	



Standing Seam Clamp	
Material	Stainless Steel
Grade	304
Standard	IS-IEC 62305 / 62561
Impulse Current	100 kA 10/350 μs
Suitability	8 mm
For roof without puncture	



Standing Seam Clamp	
Material	Stainless Steel
Standard	304
Impulse Current	IS-IEC 62305 / 62561
Dimensions	8 mm
For roof without puncture	

Coupler



Coupler	
Material	Brass
Suitability	14.2 & 17.2 mm
To extend length of earthing rod	

Bi Metallic Clamp

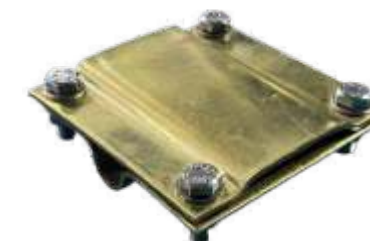


Bi Metallic Clamp	
Material	Aluminium & Copper
Suitability	25 - 30 mm
To connect Aluminium & Copper	

Tape Clamp



Rod to Cable/Tape Clamp	
Material	Brass
Type	(G)
Suitability	12.7, 14.2, 17.2, 20 & 25 mm
Suitability	16 - 120 mm ²
To connect earthing rod with cable or tape	



Cable to Tape Clamp	
Material	Brass
Suitability	20 x 3, 25 x 3, & 30 x 3mm with 50 & 78 mm ²
To connect tape to wall & roof	

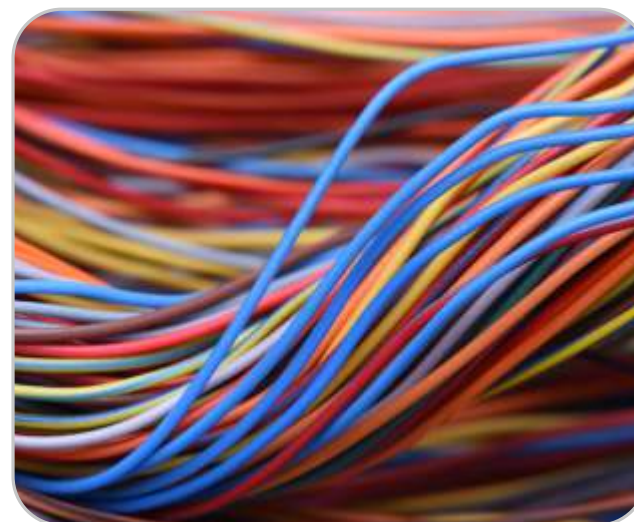
Pit Cover



FRP / Poly / MS / CI Pit Cover			
Top (Dia)	254 mm	162 mm	380 x 380
Bottom (Dia)	330 mm	242 mm	380 x 380
Height	260 mm	230 mm	32 mm

*Sizes can be customized

Wire and Cables



Installation Process

We specialize in installation and testing highly conductive, corrosion free chemical earthing system as well as lightning protection system and pure copper earthing electrode.

